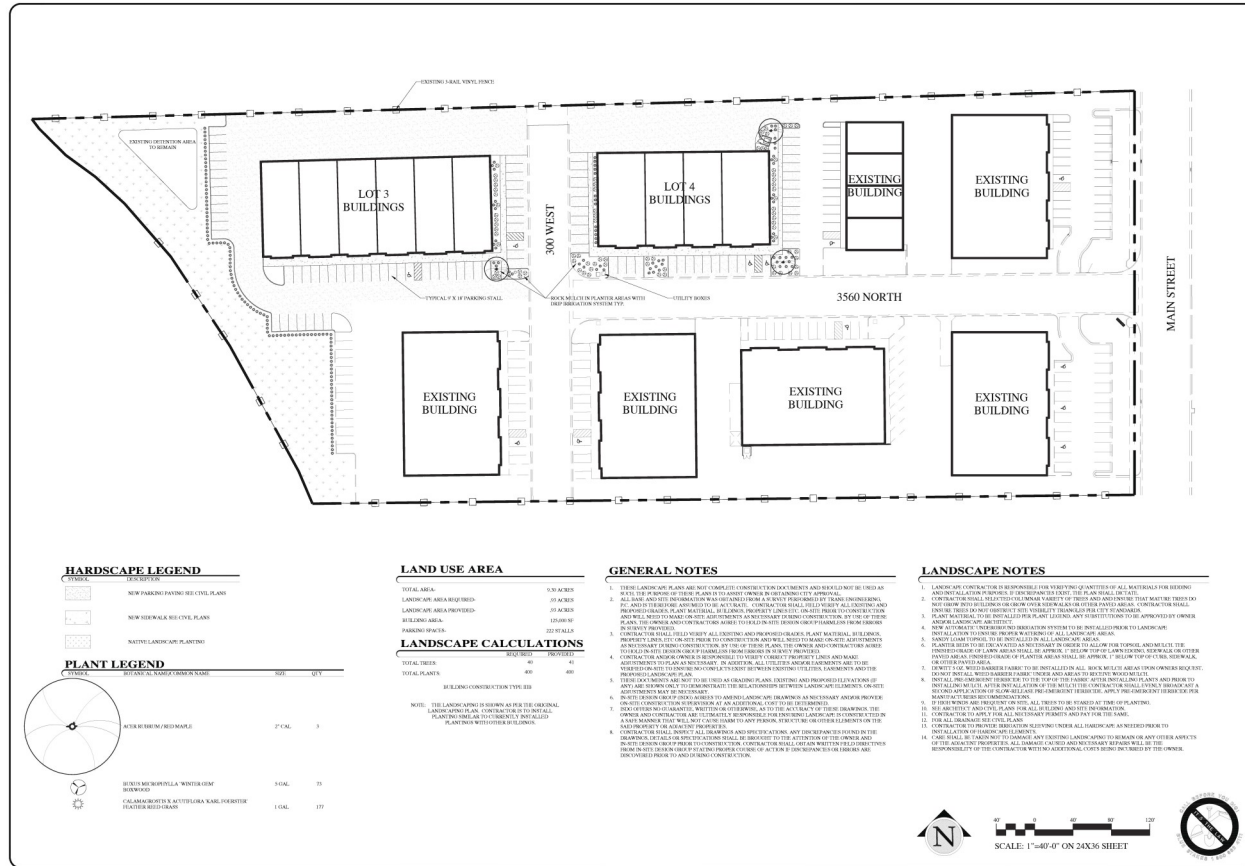
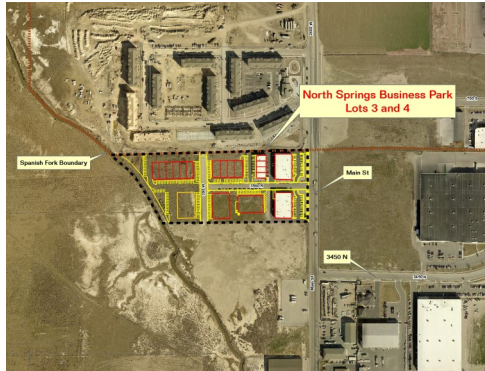




North Springs Business Park Lot 3 and 4



HARDSCAPE LEGEND

[Symbol]	NEW PARKING PAVING RES/CUT PLANS
[Symbol]	NEW SIDEWALK RES/CUT PLANS
[Symbol]	NATURAL LANDSCAPE PLANTING

PLANT LEGEND

[Symbol]	RETICULATED/REDUCIBLE	2" CAL.	3
[Symbol]	SPRINKLER/SPRINKLER	3" CAL.	25
[Symbol]	SPRINKLER/SPRINKLER	1" CAL.	127

LAND USE AREA

TOTAL AREA	0.36 ACRES
LANDSCAPE AREA REQUIRED	25 ACRES
LANDSCAPE AREA PROVIDED	125 ACRES
PARKING SPACES	225 SPACES

LANDSCAPE CALCULATIONS

TOTAL TREES	40	41
TOTAL PLANTS	400	400

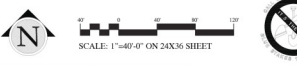
NOTE: THE LANDSCAPING IS SHOWN AS PER THE ORIGINAL LANDSCAPE PLAN. CONTRACTOR TO INSTALL PLANTING AND HARDSCAPE AS SHOWN.

GENERAL NOTES

- THESE LANDSCAPE PLANS ARE NOT COMPLETE CONSTRUCTION DOCUMENTS AND SHOULD NOT BE USED AS SUCH. THE OWNER IS RESPONSIBLE FOR OBTAINING ALL NECESSARY PERMITS AND APPROVALS FROM THE CITY OF SPANISH FORK.
- ALL HARDSCAPE AND PLANTING SHALL BE INSTALLED IN ACCORDANCE WITH THE CITY OF SPANISH FORK LANDSCAPE ORDINANCES AND THE CITY OF SPANISH FORK LANDSCAPE DESIGN MANUAL.
- CONTRACTOR SHALL FIELD VERIFY ALL EXISTING AND PROPOSED PLANTING MATERIAL, SIZE, COLOR, AND CONDITION PRIOR TO CONSTRUCTION AND SHALL NOTIFY THE OWNER IMMEDIATELY IN WRITING OF ANY DEFICIENCIES.
- CONTRACTOR SHALL MAINTAIN ACCESS TO ALL EXISTING UTILITIES AND SHALL BE RESPONSIBLE FOR ANY DAMAGE TO UTILITIES DURING CONSTRUCTION.
- CONTRACTOR SHALL MAINTAIN ACCESS TO ALL EXISTING AND PROPOSED PLANTING MATERIAL AND SHALL BE RESPONSIBLE FOR ANY DAMAGE TO MATERIAL DURING CONSTRUCTION.
- CONTRACTOR SHALL MAINTAIN ACCESS TO ALL EXISTING AND PROPOSED PLANTING MATERIAL AND SHALL BE RESPONSIBLE FOR ANY DAMAGE TO MATERIAL DURING CONSTRUCTION.
- CONTRACTOR SHALL MAINTAIN ACCESS TO ALL EXISTING AND PROPOSED PLANTING MATERIAL AND SHALL BE RESPONSIBLE FOR ANY DAMAGE TO MATERIAL DURING CONSTRUCTION.
- CONTRACTOR SHALL MAINTAIN ACCESS TO ALL EXISTING AND PROPOSED PLANTING MATERIAL AND SHALL BE RESPONSIBLE FOR ANY DAMAGE TO MATERIAL DURING CONSTRUCTION.
- CONTRACTOR SHALL MAINTAIN ACCESS TO ALL EXISTING AND PROPOSED PLANTING MATERIAL AND SHALL BE RESPONSIBLE FOR ANY DAMAGE TO MATERIAL DURING CONSTRUCTION.
- CONTRACTOR SHALL MAINTAIN ACCESS TO ALL EXISTING AND PROPOSED PLANTING MATERIAL AND SHALL BE RESPONSIBLE FOR ANY DAMAGE TO MATERIAL DURING CONSTRUCTION.
- CONTRACTOR SHALL MAINTAIN ACCESS TO ALL EXISTING AND PROPOSED PLANTING MATERIAL AND SHALL BE RESPONSIBLE FOR ANY DAMAGE TO MATERIAL DURING CONSTRUCTION.
- CONTRACTOR SHALL MAINTAIN ACCESS TO ALL EXISTING AND PROPOSED PLANTING MATERIAL AND SHALL BE RESPONSIBLE FOR ANY DAMAGE TO MATERIAL DURING CONSTRUCTION.
- CONTRACTOR SHALL MAINTAIN ACCESS TO ALL EXISTING AND PROPOSED PLANTING MATERIAL AND SHALL BE RESPONSIBLE FOR ANY DAMAGE TO MATERIAL DURING CONSTRUCTION.
- CONTRACTOR SHALL MAINTAIN ACCESS TO ALL EXISTING AND PROPOSED PLANTING MATERIAL AND SHALL BE RESPONSIBLE FOR ANY DAMAGE TO MATERIAL DURING CONSTRUCTION.
- CONTRACTOR SHALL MAINTAIN ACCESS TO ALL EXISTING AND PROPOSED PLANTING MATERIAL AND SHALL BE RESPONSIBLE FOR ANY DAMAGE TO MATERIAL DURING CONSTRUCTION.

LANDSCAPE NOTES

- LANDSCAPE CONTRACTOR IS RESPONSIBLE FOR VERIFYING THE QUANTITIES OF ALL MATERIALS FOR BEDDING AND INSTALLATION PURPOSES. IT IS THE CONTRACTOR'S RESPONSIBILITY TO OBTAIN ALL NECESSARY PERMITS AND APPROVALS FROM THE CITY OF SPANISH FORK.
- CONTRACTOR SHALL MAINTAIN ACCESS TO ALL EXISTING UTILITIES AND SHALL BE RESPONSIBLE FOR ANY DAMAGE TO UTILITIES DURING CONSTRUCTION.
- CONTRACTOR SHALL MAINTAIN ACCESS TO ALL EXISTING UTILITIES AND SHALL BE RESPONSIBLE FOR ANY DAMAGE TO UTILITIES DURING CONSTRUCTION.
- CONTRACTOR SHALL MAINTAIN ACCESS TO ALL EXISTING UTILITIES AND SHALL BE RESPONSIBLE FOR ANY DAMAGE TO UTILITIES DURING CONSTRUCTION.
- CONTRACTOR SHALL MAINTAIN ACCESS TO ALL EXISTING UTILITIES AND SHALL BE RESPONSIBLE FOR ANY DAMAGE TO UTILITIES DURING CONSTRUCTION.
- CONTRACTOR SHALL MAINTAIN ACCESS TO ALL EXISTING UTILITIES AND SHALL BE RESPONSIBLE FOR ANY DAMAGE TO UTILITIES DURING CONSTRUCTION.
- CONTRACTOR SHALL MAINTAIN ACCESS TO ALL EXISTING UTILITIES AND SHALL BE RESPONSIBLE FOR ANY DAMAGE TO UTILITIES DURING CONSTRUCTION.
- CONTRACTOR SHALL MAINTAIN ACCESS TO ALL EXISTING UTILITIES AND SHALL BE RESPONSIBLE FOR ANY DAMAGE TO UTILITIES DURING CONSTRUCTION.
- CONTRACTOR SHALL MAINTAIN ACCESS TO ALL EXISTING UTILITIES AND SHALL BE RESPONSIBLE FOR ANY DAMAGE TO UTILITIES DURING CONSTRUCTION.
- CONTRACTOR SHALL MAINTAIN ACCESS TO ALL EXISTING UTILITIES AND SHALL BE RESPONSIBLE FOR ANY DAMAGE TO UTILITIES DURING CONSTRUCTION.
- CONTRACTOR SHALL MAINTAIN ACCESS TO ALL EXISTING UTILITIES AND SHALL BE RESPONSIBLE FOR ANY DAMAGE TO UTILITIES DURING CONSTRUCTION.
- CONTRACTOR SHALL MAINTAIN ACCESS TO ALL EXISTING UTILITIES AND SHALL BE RESPONSIBLE FOR ANY DAMAGE TO UTILITIES DURING CONSTRUCTION.
- CONTRACTOR SHALL MAINTAIN ACCESS TO ALL EXISTING UTILITIES AND SHALL BE RESPONSIBLE FOR ANY DAMAGE TO UTILITIES DURING CONSTRUCTION.
- CONTRACTOR SHALL MAINTAIN ACCESS TO ALL EXISTING UTILITIES AND SHALL BE RESPONSIBLE FOR ANY DAMAGE TO UTILITIES DURING CONSTRUCTION.
- CONTRACTOR SHALL MAINTAIN ACCESS TO ALL EXISTING UTILITIES AND SHALL BE RESPONSIBLE FOR ANY DAMAGE TO UTILITIES DURING CONSTRUCTION.



In Site DESIGN GROUP
 LANDSCAPE ARCHITECTURE, LANDSCAPE DESIGN, PLANNING, AND CONSTRUCTION
 1000 S. MAIN ST., SUITE 100, SPANISH FORK, UT 84303
 PH: 435.533.1111 FAX: 435.533.1112
 WWW.INSITEDESIGN.COM

SEAL
 NORTH SPRINGS
 SPANISH FORK, UTAH
 CITY SUBMITTAL PLAN - SOFT LINE CONSTRUCTION
 LANDSCAPING PLAN
 DATE: 10-16-2017
 DRAWN BY: CHW
 CHECKED BY: CHW
 PERMITTED BY: CHW
 SCALE: 1"=40' ON 24X36 SHEET
 LS.1.1

File Name: North Springs Business Park Lot 3 and 4
 Applicant: North Springs Business Park
 Number of Lots: 2
 Address: 3560 North Main Street
 Application Date: 10/17/2017

Site Plan
 9.3 Acres
 File Number: 17-001221
 Permit Number: SP17-000017
 Application Approved: 11/29/2017