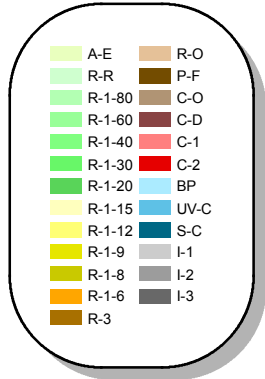


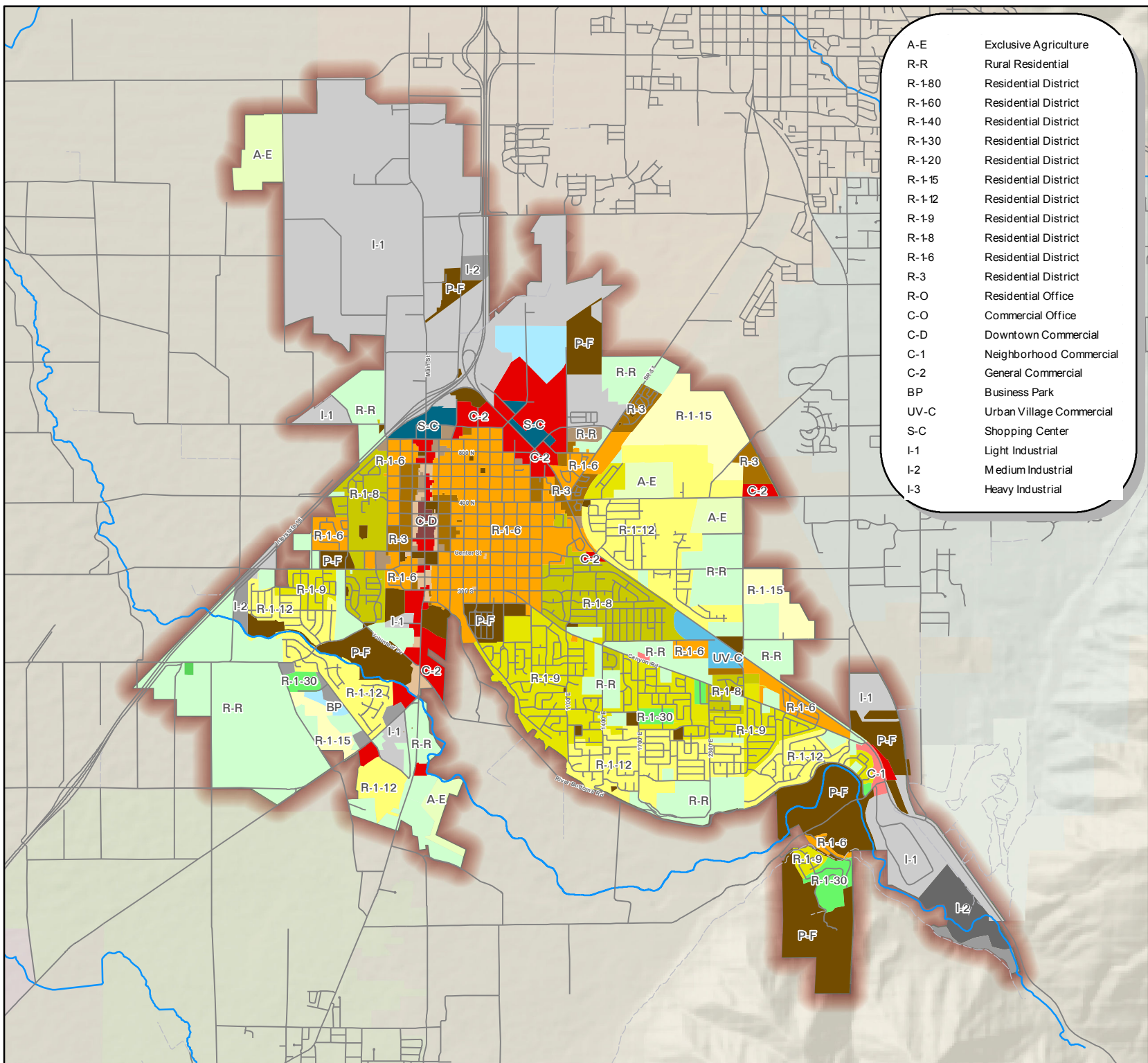
# SPANISH FORK ZONING MAP



1 Inch = 5,002 Feet



A-E	Exclusive Agriculture
R-R	Rural Residential
R-1-80	Residential District
R-1-60	Residential District
R-1-40	Residential District
R-1-30	Residential District
R-1-20	Residential District
R-1-15	Residential District
R-1-12	Residential District
R-1-9	Residential District
R-1-8	Residential District
R-1-6	Residential District
R-3	Residential District
R-O	Residential Office
C-O	Commercial Office
C-D	Downtown Commercial
C-1	Neighborhood Commercial
C-2	General Commercial
BP	Business Park
UV-C	Urban Village Commercial
S-C	Shopping Center
I-1	Light Industrial
I-2	Medium Industrial
I-3	Heavy Industrial



Date Created: 3/8/2012



GEOGRAPHIC INFORMATION SYSTEMS

## SPANISH FORK CITY GIS

40 South Main Street  
 Spanish Fork, UT 84660  
 801.804.4571 (Admin)  
 801.804.4570 (Interns)

Disclaimer: Spanish Fork City makes no warranty with respect to the accuracy, completeness, or usefulness of these maps. Spanish Fork City assumes no liability for direct, indirect, special, or consequential damages resulting from the use or misuse of these maps or any of the information contained herein. Portions may be copied for incidental uses, but may not be resold.