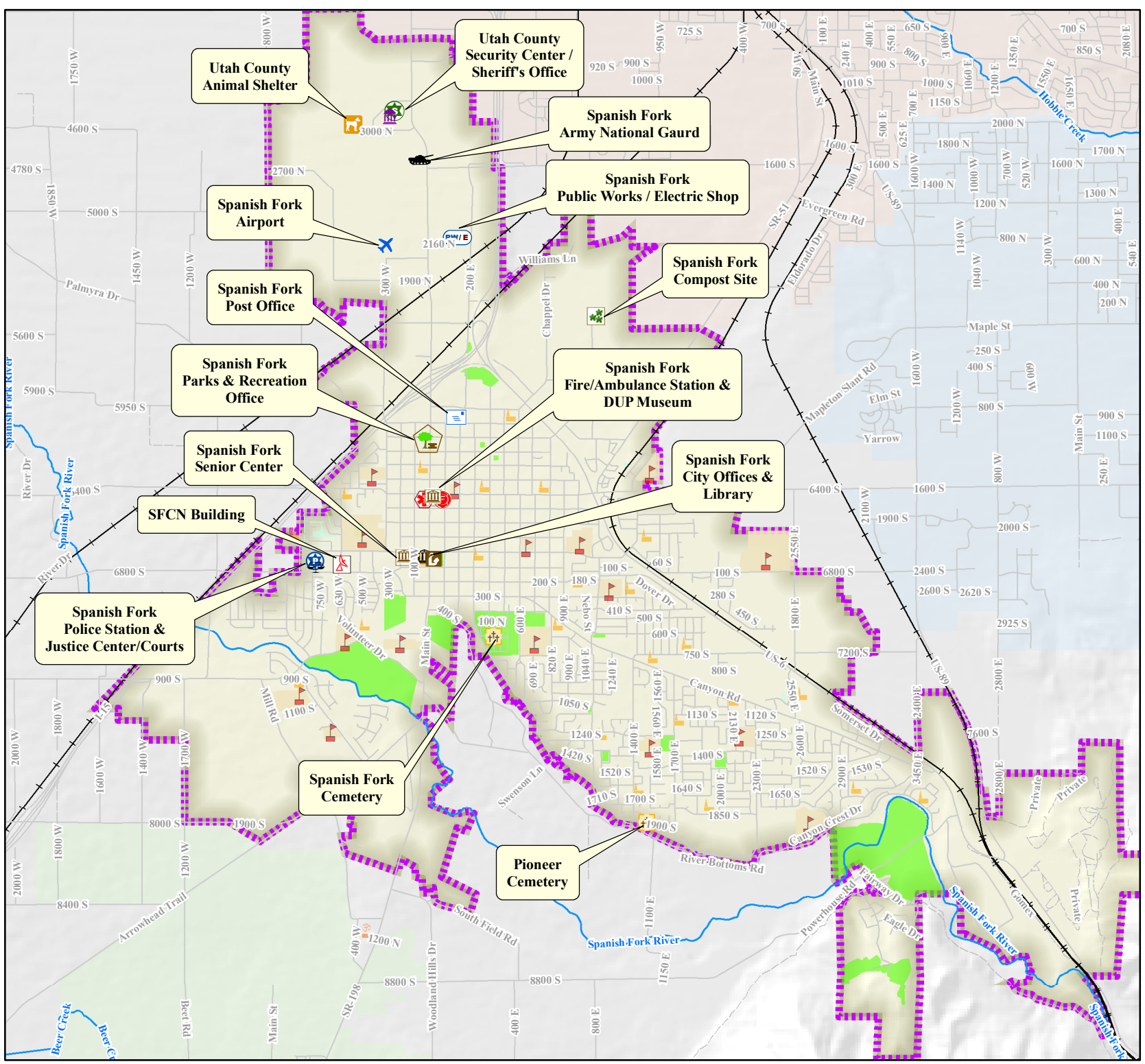


# Spanish Fork Public Facilities



1 Inch = 4,322 Feet

- Legend**
- |                              |                             |
|------------------------------|-----------------------------|
| Public Facilities            | School Points               |
| Fire/Ambulance               | Church Points               |
| Army National Guard          | LDS                         |
| Parks and Recreation Office  | Christian Church (Non-LDS)  |
| Police                       | Hare Krishna                |
| Government Offices           | Roads                       |
| Civic Building               | Other Roads                 |
| Public Works/Electric        | Not Paved                   |
| Library                      | Paved                       |
| Airport                      | Railroad                    |
| Cemetery                     | Rivers                      |
| SFC N Building               | Schools                     |
| Compost Site                 | Private                     |
| Solid Water Transfer Station | Public                      |
| Post Office                  | Spanish Fork Boundary       |
| Courthouse                   | SF Gradient Fill Boundary   |
| Sheriff                      | Utah County City Boundaries |
| Security Center              | Mapleton                    |
| Animal Shelter               | Payson                      |
|                              | Salem                       |
|                              | Springville                 |



3/11/2009



Geographic Information Systems  
 Spanish Fork City GIS  
 40 South Main Street  
 Spanish Fork, UT 84660  
 (801) 798-5000

Disclaimer: Spanish Fork City makes no warranty with respect to the accuracy, completeness, or usefulness of these maps. Spanish Fork City assumes no liability for direct, indirect, special, or consequential damages resulting from the use or misuse of these maps or any of the information contained herein. Portions may be copied for incidental uses, but may not be resold.